

**Sinethemba Dlamini**  
071 506 9424  
sinethemba@everitt.co.za

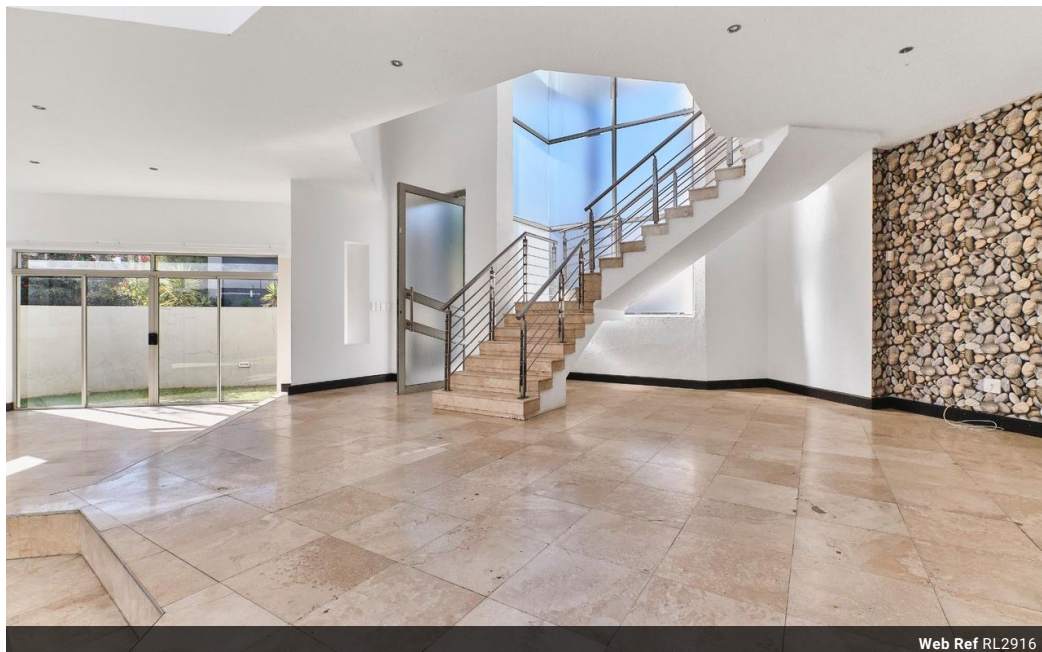


**Michela Rae**  
083 946 3815  
michela@everitt.co.za

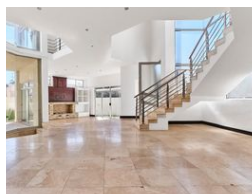
Contact Sandton

011 801 2500

Shop 12  
Hyde Square Shopping Centre  
Corner Jan Smuts Avenue & North Road  
Dunkeld West  
2196



Web Ref RL2916



R36,000 pm

**Lease Period** None  
**Annual Escalation** -  
**Lease Excludes:**  
Electricity, Water

**Availability** Immediately

**Deposit** R36,000

4 3.5 2

## 4 Bedroom House To Let in Sandown

Experience opulent living in this stunning 4-bedroom sanctuary nestled within a secure, small complex in the sought-after area of Sandown. Boasting an aura of sophistication and comfort, this residence offers a seamless blend of elegance and functionality. Upon entry, be greeted by a grand, double-volume entrance exuding elegance and comfort. The spacious, open-plan living areas downstairs are designed for both entertainment and relaxation, featuring a fireplace and stacking doors that lead out to an expansive entertainer's patio and a generously sized garden—a perfect oasis for outdoor gatherings and leisure. The gourmet kitchen, equipped with Caesarstone countertops and a separate scullery, is a culinary haven for aspiring chefs. Upstairs, the luxury continues with four bedrooms, each leading to its own private...

## Features

Interior		Exterior		Sizes	
Bedrooms	4	Garages	2	Floor Size	500m <sup>2</sup>
Bathrooms	3.5	Carports / Parkings	2		
Recep. Rooms	2	Security	Yes		
Furnished	No	Dom. Accom.	1		
		Pool	No		
		Views	No		

